



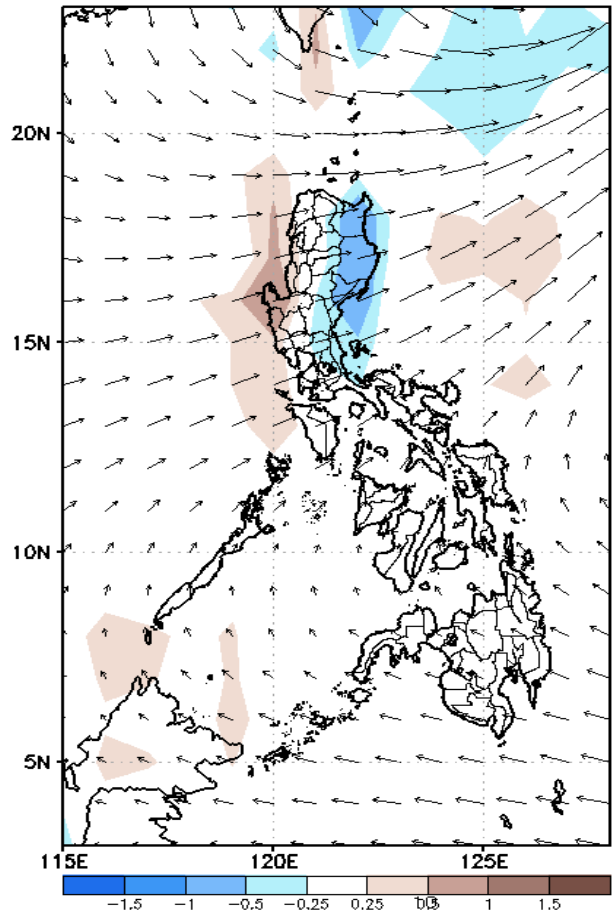
Week 1 & Week 2 Forecast for the Philippines using GEFS Model



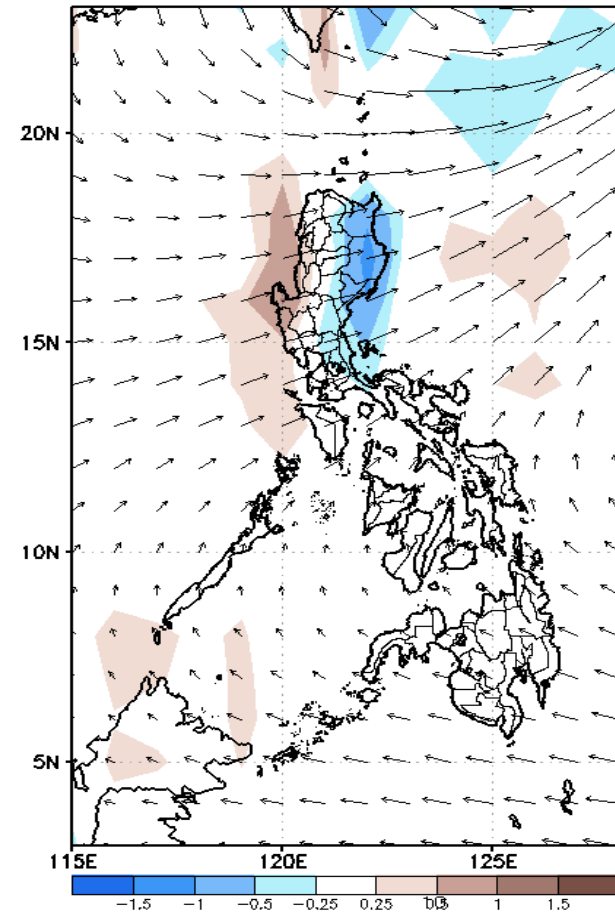
GEFS Week-1 Forecasts: Wind Anomaly Forecast

Week 1: Aug 31-Sep 06, 2022

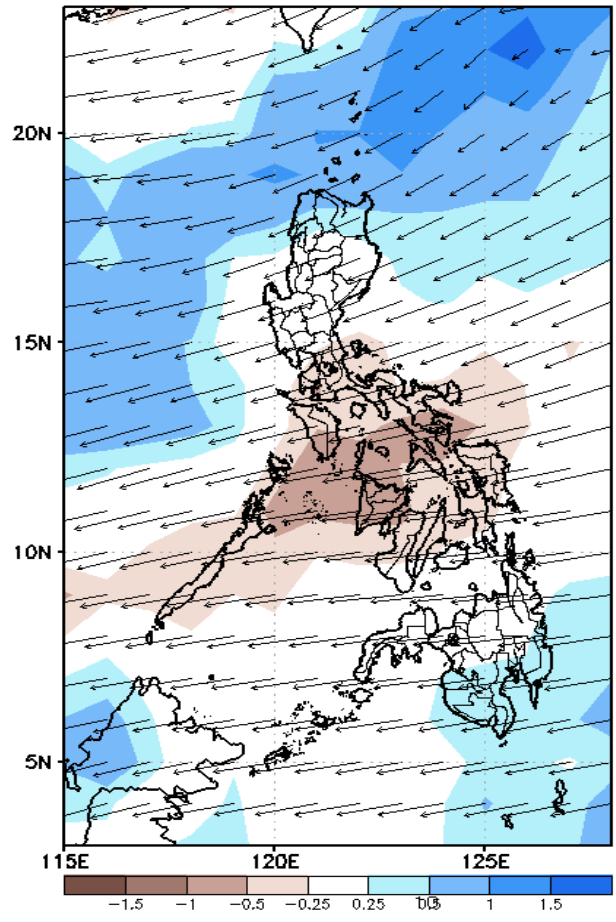
GEFS Week-1 850-hPa Divergence and Wind Anom
Valid: 20220831 - 20220906



GEFS Week-1 700-hPa Divergence and Wind Anom
Valid: 20220831 - 20220906



GEFS Week-1 200-hPa Divergence and Wind Anom
Valid: 20220831 - 20220906

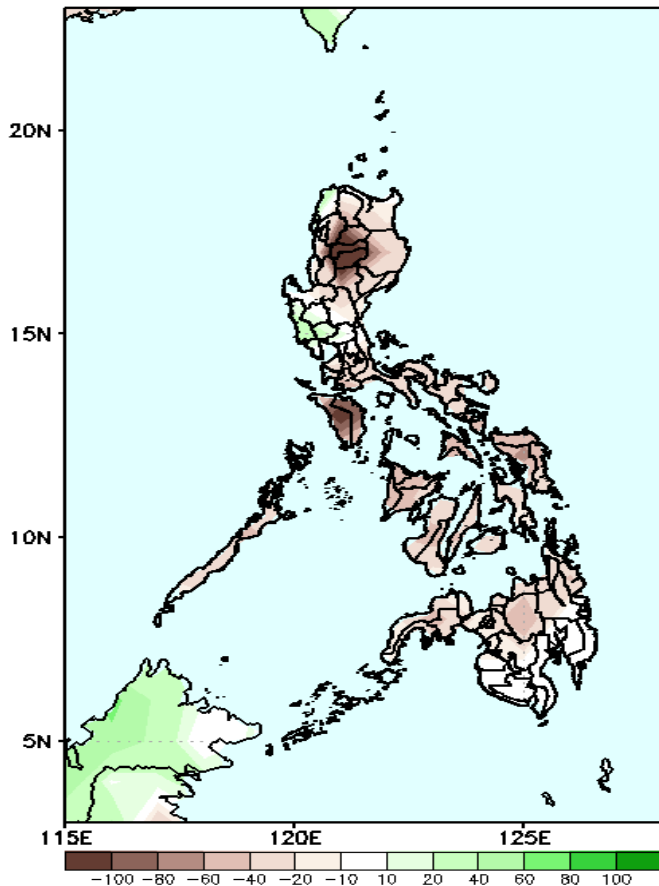


Southwest Monsoon affecting most parts of Luzon while Easterlies Visayas and Mindanao during the forecast period.

Precipitation Anomaly and Exceedance Probability > 25/50 mm

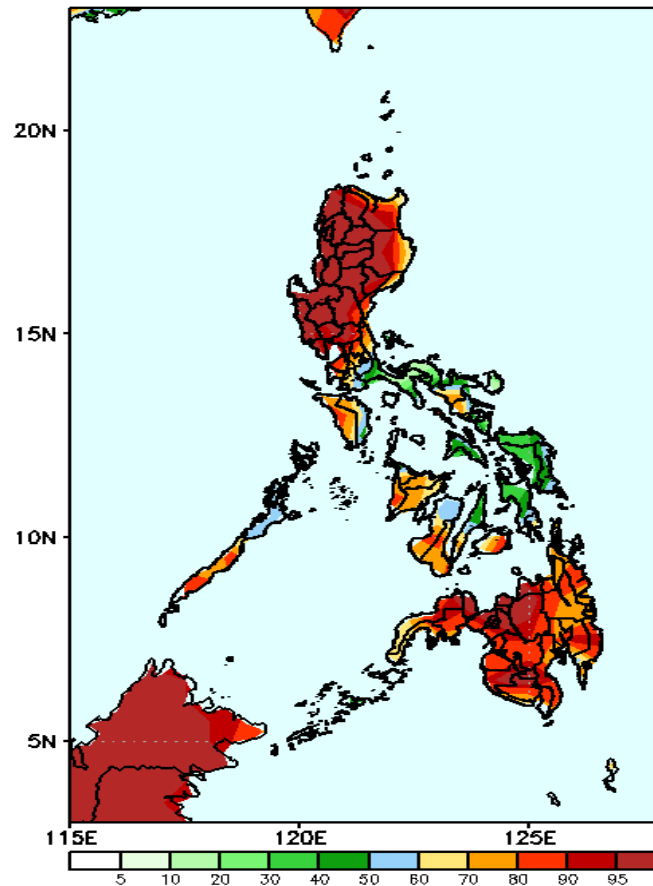
Week 1: Aug 31-Sep 06, 2022

GEFS Week-1 Precip Anomaly
Valid: 20220831 - 20220906



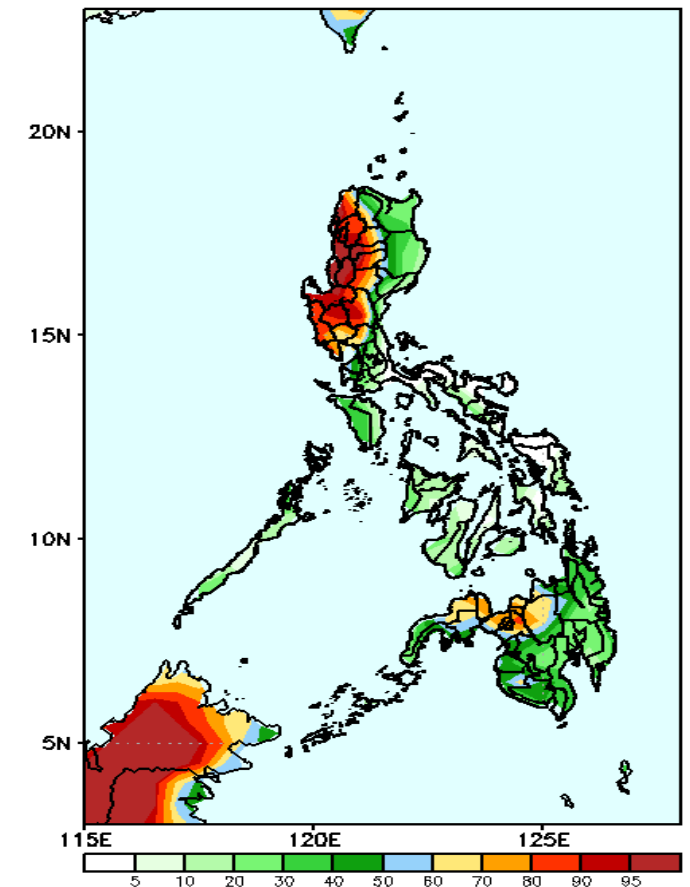
Rainfall deficit of more than 100mm is expected in most parts of Cordillera Region and Mindoro and 40-80mm for the rest of the country during the forecast period.

GEFS Week-1 Exceedance Prob. > 25mm
Valid: 20220831 - 20220906



High probability of rainfall to exceed 25mm in most parts of the country except in some areas in Bicol Region and Eastern Visayas during the forecast period.

GEFS Week-1 Exceedance Prob. > 50mm
Valid: 20220831 - 20220906



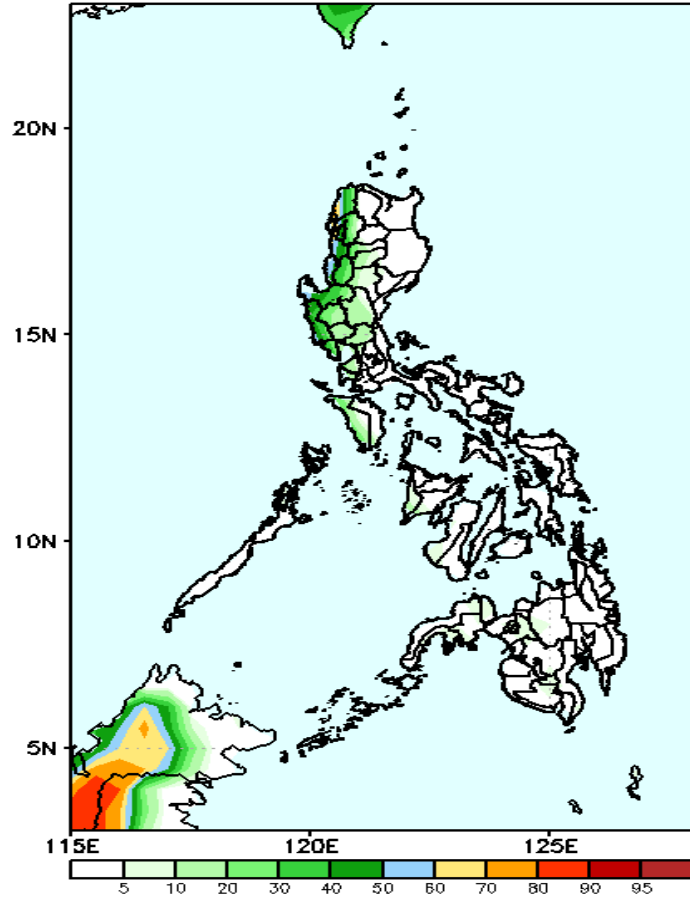
High probability of rainfall to exceed 50mm in most parts of western & Central Luzon and northern Mindanao while less likely for the rest of the country during the forecast period.



Exceedance Probability > 100/150/200 mm

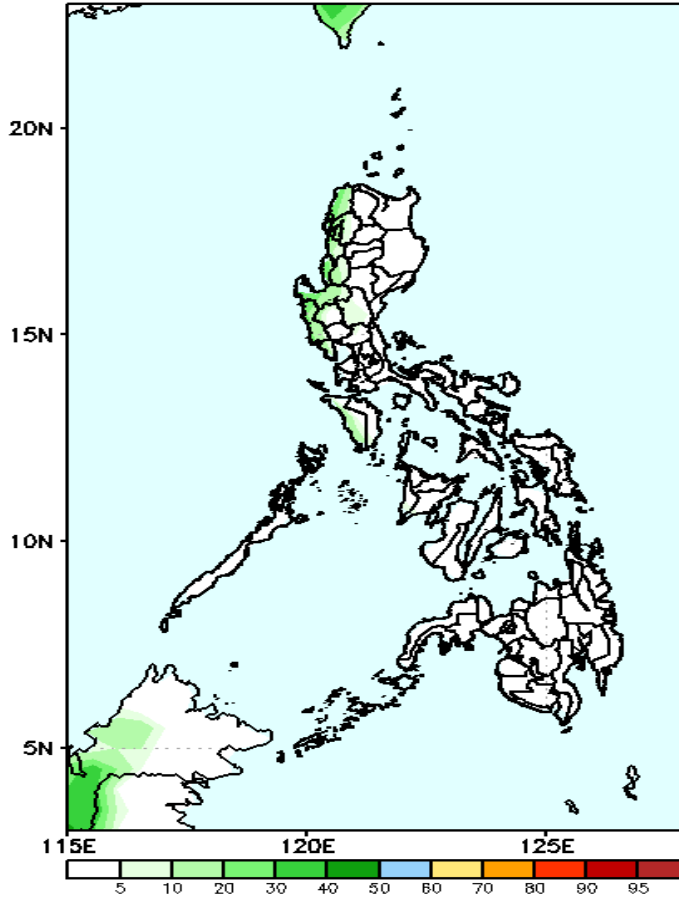
Week 1: Aug 31-Sep 06, 2022

GEFS Week-1 Exceedance Prob. > 100mm
Valid: 20220831 - 20220906



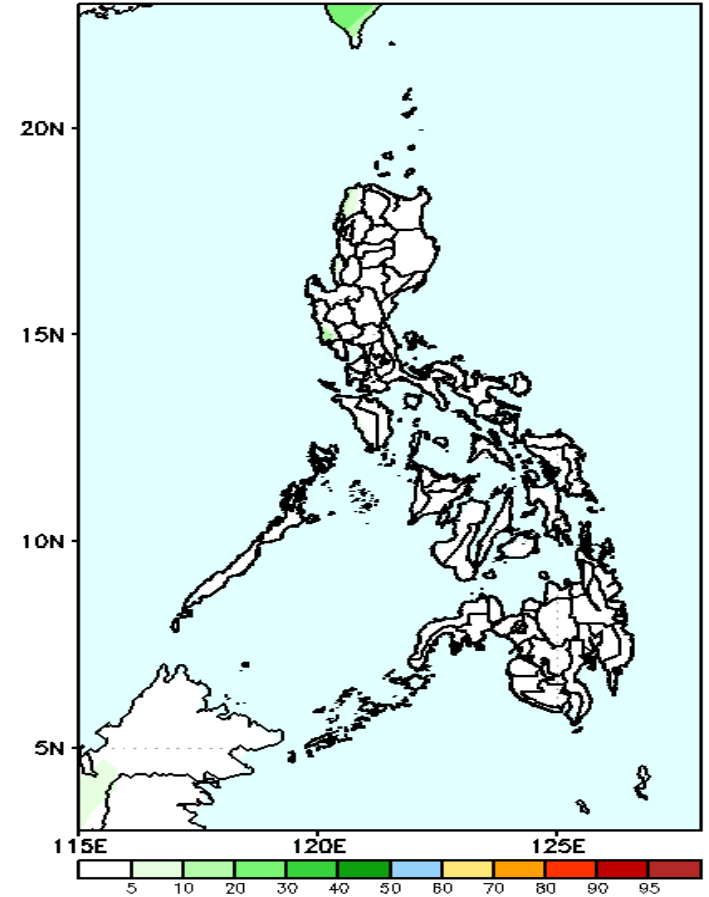
Low probability of rainfall to exceed 100mm in most parts of the country during the forecast period.

GEFS Week-1 Exceedance Prob. > 150mm
Valid: 20220831 - 20220906



Low probability of rainfall to exceed 150mm in most parts of the country during the forecast period.

GEFS Week-1 Exceedance Prob. > 200mm
Valid: 20220831 - 20220906

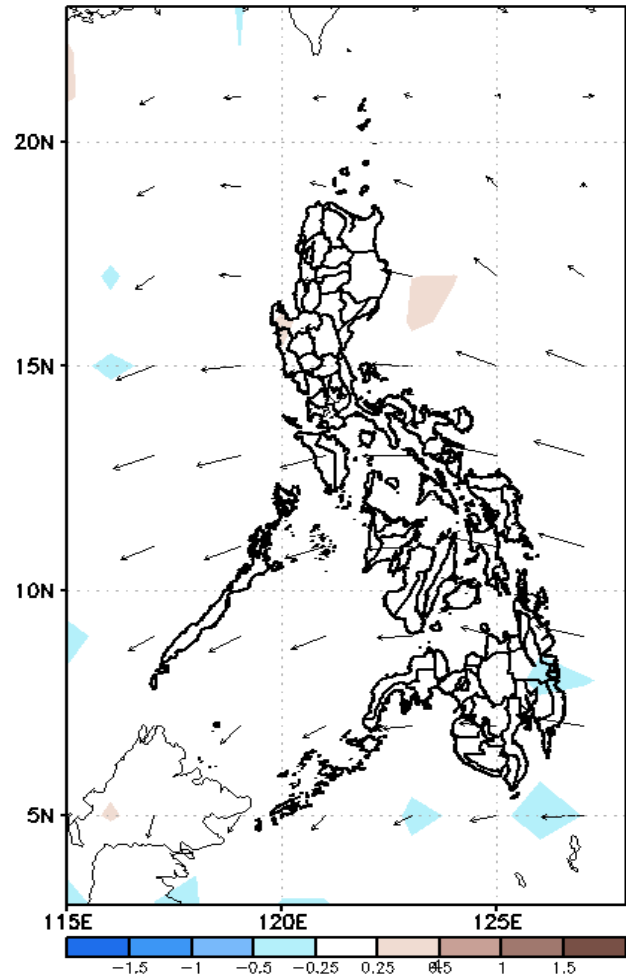


Low probability of rainfall to exceed 200mm in most parts of the country during the forecast period.

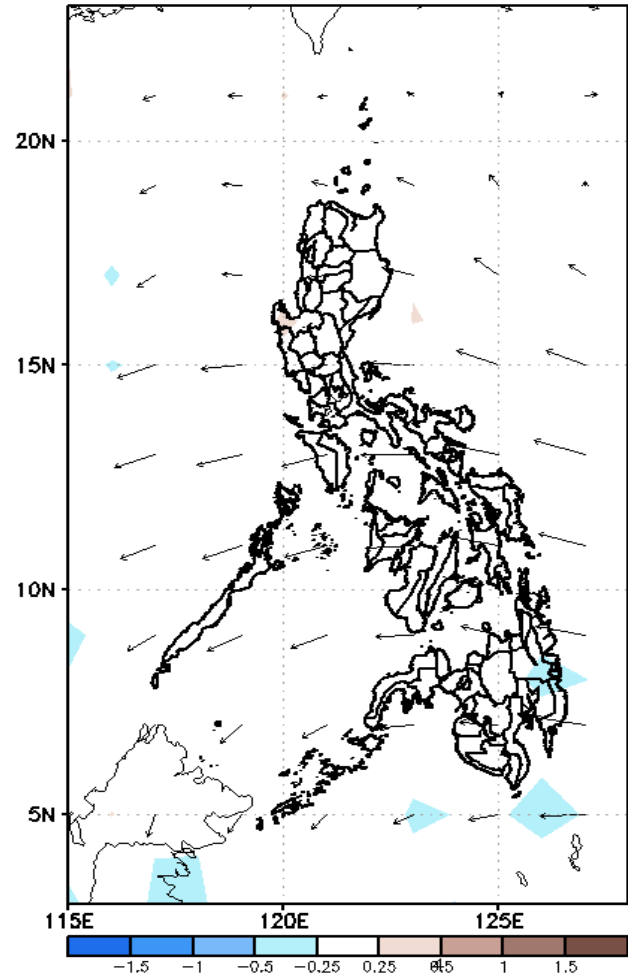
GEFS Week-2 Forecasts: Wind Anomaly Forecast

Week 2: Sep 07-13, 2022

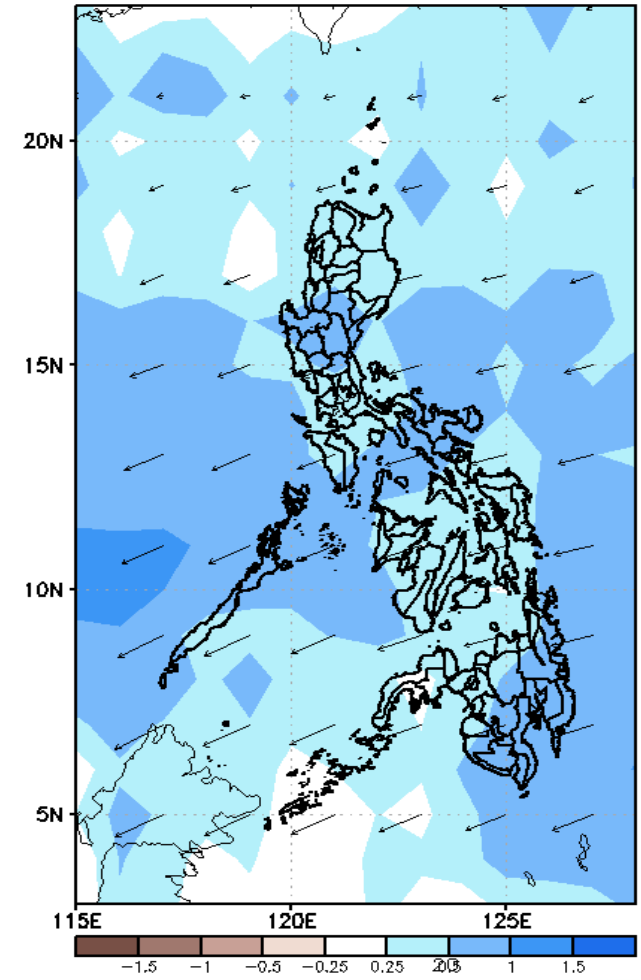
GEFS Week-2 850-hPa Divergence and Wind Anom. Valid: 20220907 - 20220913



GEFS Week-2 700-hPa Divergence and Wind Anom. Valid: 20220907 - 20220913



GEFS week-2 200-hPa Divergence and Wind Anom. Valid: 20220907 - 20220913

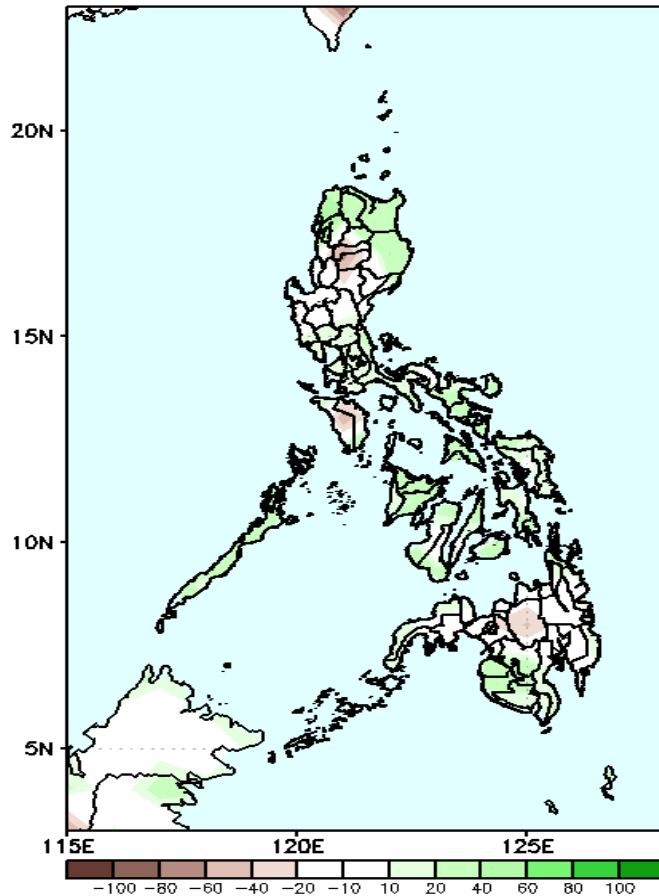


Easterlies affecting most parts of the country during the forecast period.

Precipitation Anomaly and Exceedance Probability > 25/50 mm

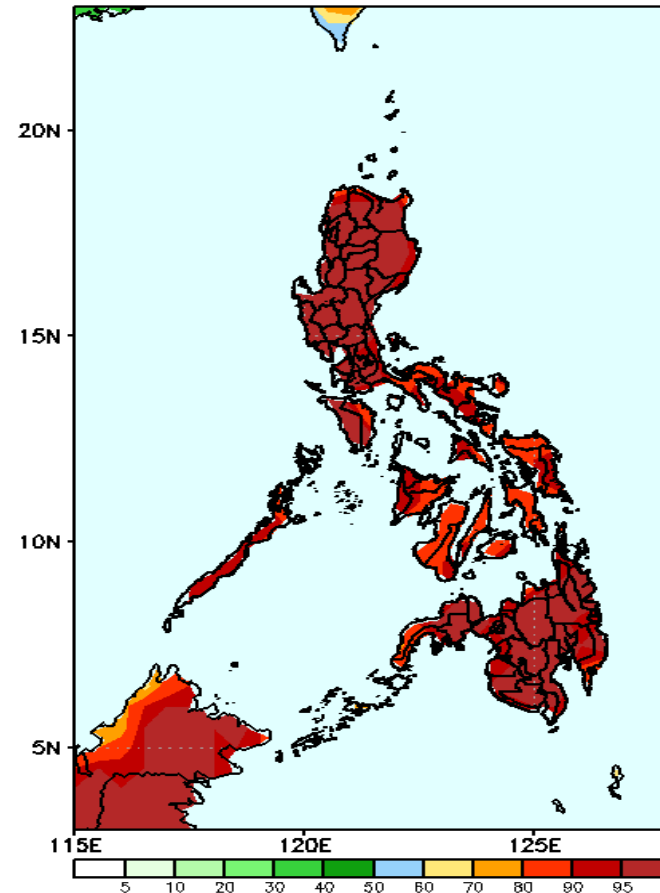
Week 2: Sep 07-13, 2022

GEFS Week-2 Precip Anomaly
Valid: 20220907 - 20220913



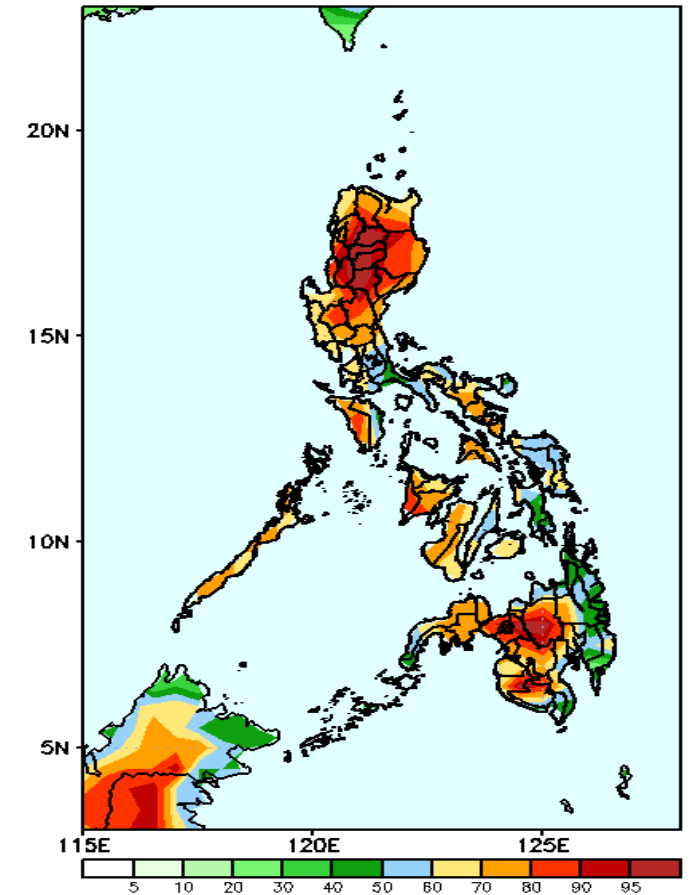
Rainfall deficit of 40-100mm is expected in most parts of the country except in southwestern Mindanao during the forecast period.

GEFS Week-2 Exceedance Prob. > 25mm
Valid: 20220907 - 20220913



Low probability of rainfall to exceed 25mm in most parts of the country during the forecast period.

GEFS Week-2 Exceedance Prob. > 50mm
Valid: 20220907 - 20220913

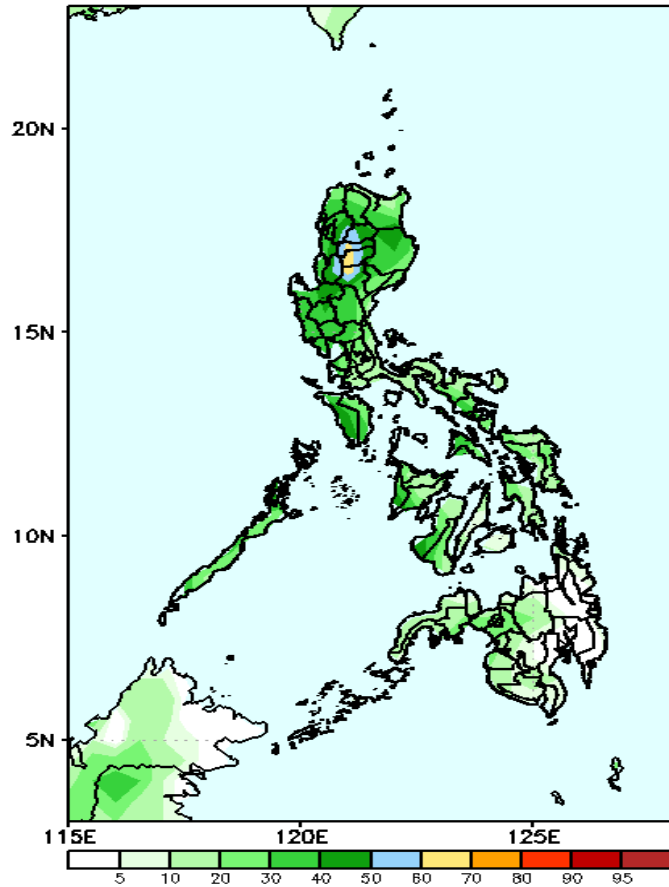


High probability of rainfall to exceed 50mm in most parts of the country except in some areas in western Mindanao during the forecast period.

Exceedance Probability > 100/150/200 mm

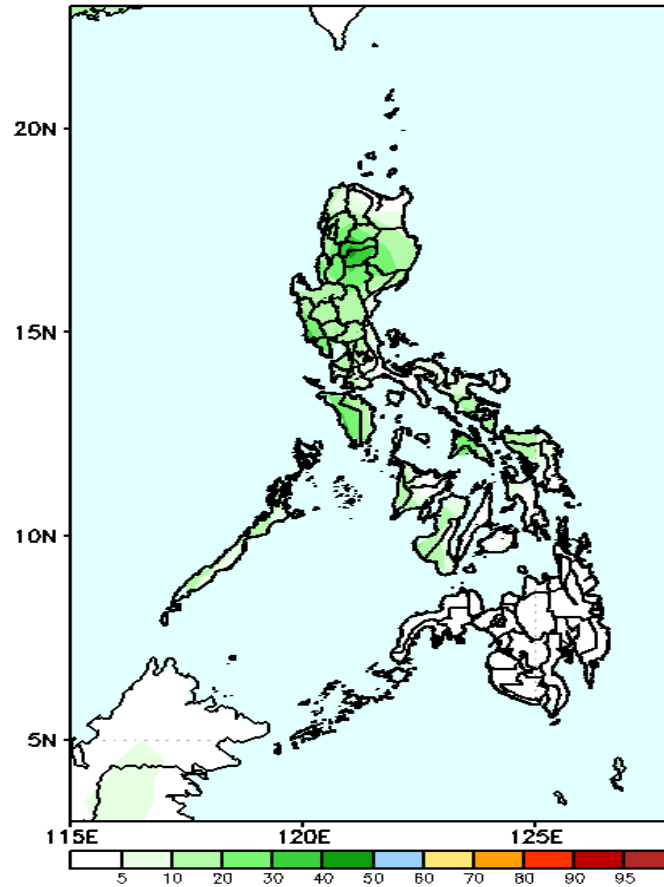
Week 2: Sep 07-13, 2022

GEFS Week-2 Exceedance Prob. > 100mm
Valid: 20220907 - 20220913



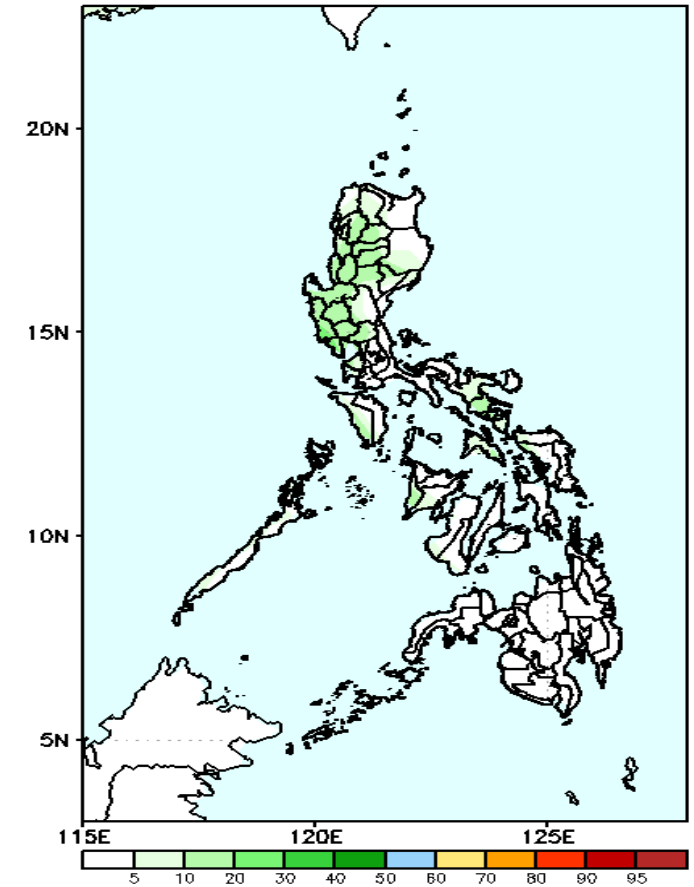
Low probability of rainfall to exceed 100mm in most parts of the country during the forecast period.

GEFS Week-2 Exceedance Prob. > 150mm
Valid: 20220907 - 20220913



Low probability of rainfall to exceed 150mm in most parts of the country during the forecast period.

GEFS Week-2 Exceedance Prob. > 200mm
Valid: 20220907 - 20220913

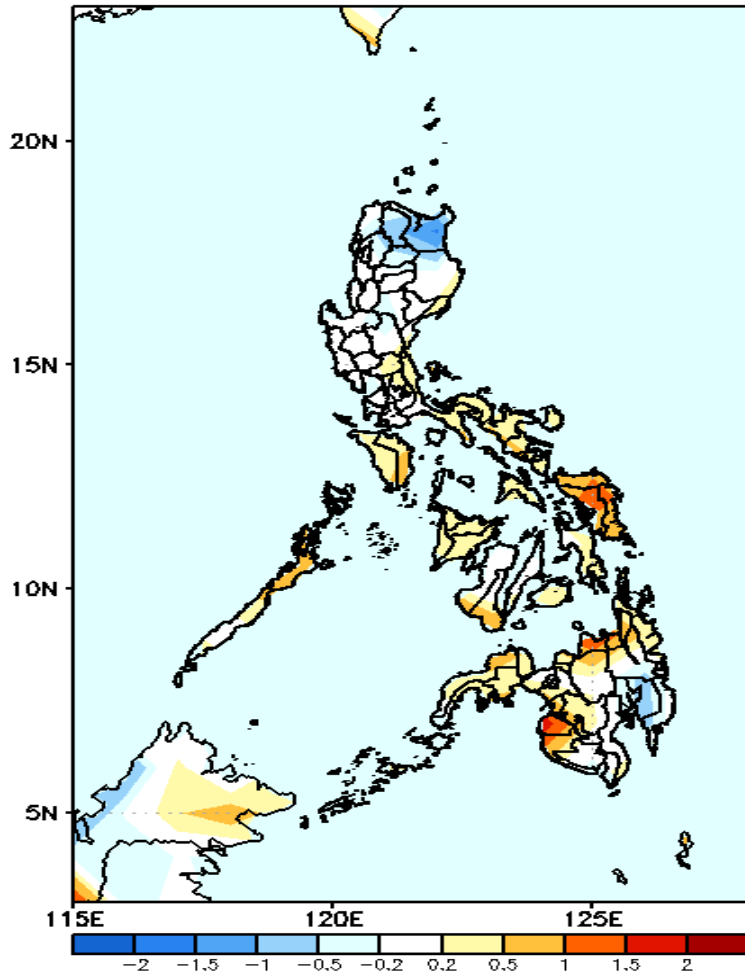


Low probability of rainfall to exceed 200mm in most parts of the country during the forecast period.



GEFS Week-1 & 2 Forecasts: T2m Anomaly

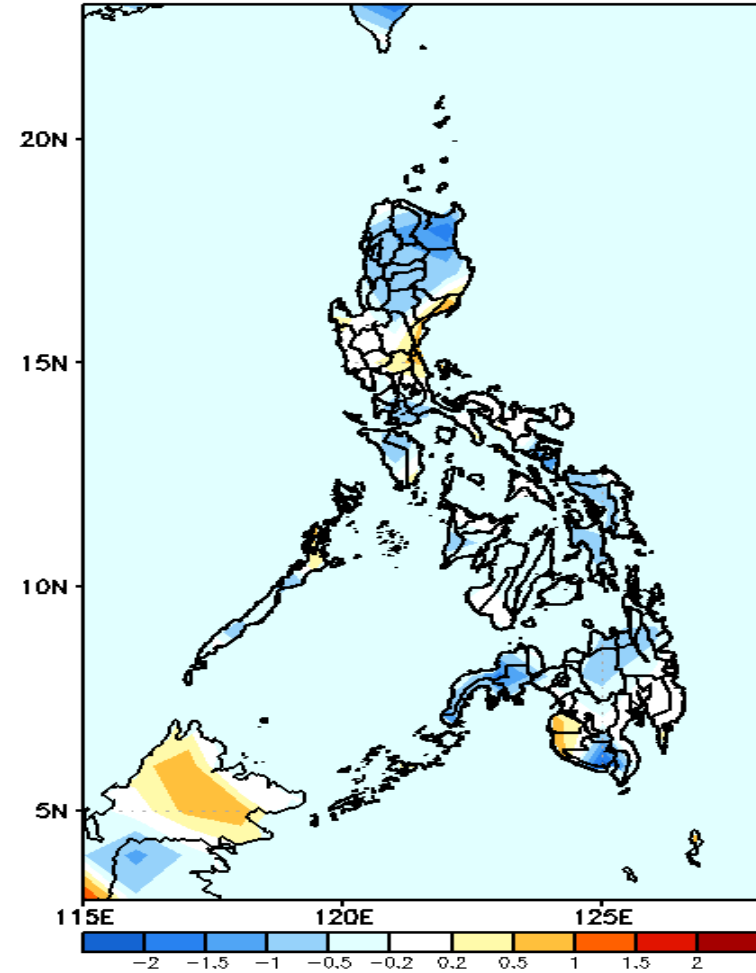
GEFS Week-1 T2m Anomaly
Valid: 20220831 - 20220906



2m Temperature Week 1: Aug 31-Sep 06, 2022

Slightly warmer to warmer than average surface air temperature will likely experience in most parts of Southern Luzon, Bicol Region and in Visayas and Mindanao while cooler than average in Apayao and Cagayan and near average for the rest of Luzon and Davao Region during the forecast period.

GEFS Week-2 T2m Anomaly
Valid: 20220907 - 20220913



2m Temperature Week 2: Sep 07-13, 2022

Near to cooler than average surface air temperature will likely experience in most parts of the country except in Central Luzon, Maguindanao & Sultan Kudarat where near to slightly warmer temperature is expected during the forecast period.